

POZA 16 SCNCE + 26 & 32 VANITIES

SLWS748; SLBA749; SLBA750

General Product Information



Suggested/Required Tools



Safety Information

CAUTION-RISK OF FIRE

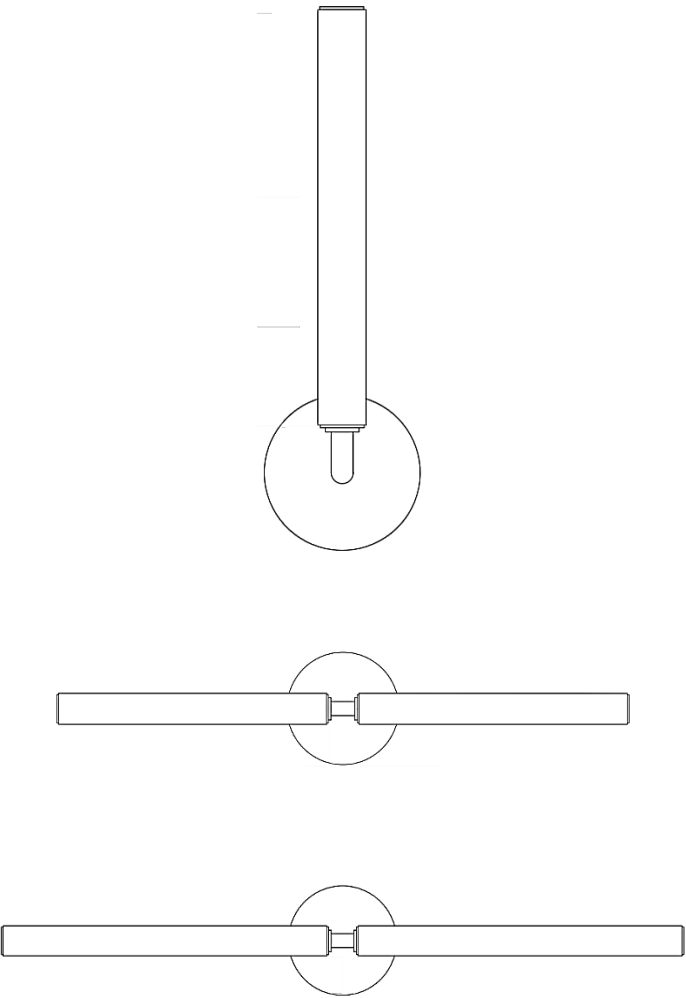
This product must be installed in accordance with the applicable installation code by a person familiar with the construction and operation of the product and the hazards involved.

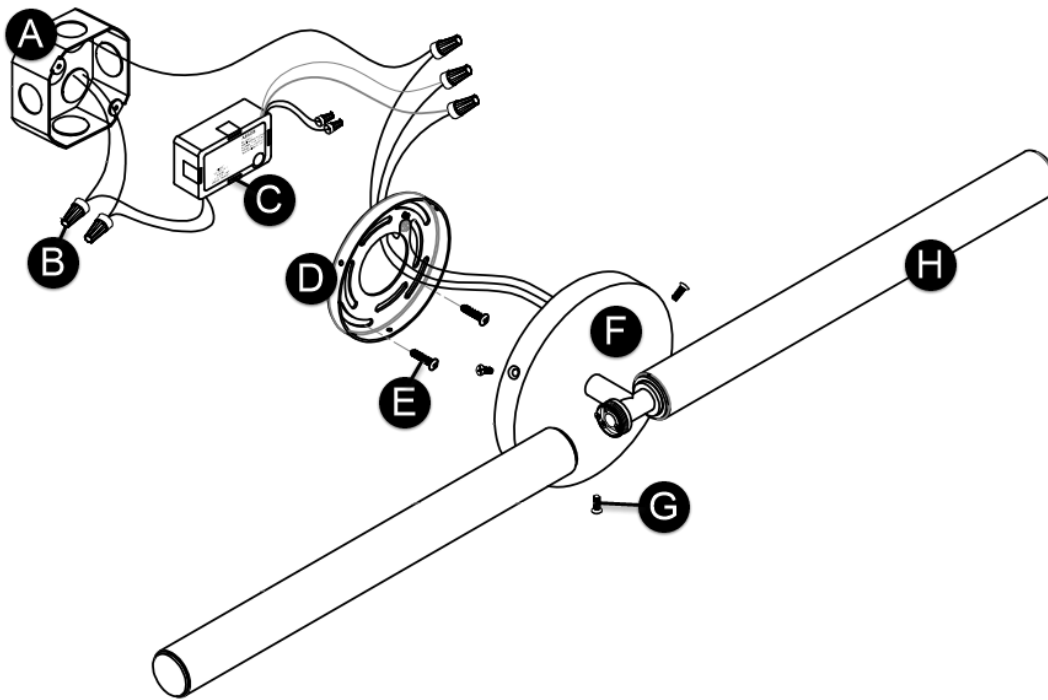
USE MINIMUM 90°C SUPPLY CONDUCTORS.



Turn off electrical current at the source before working with any lighting fixture or portable lamp.

Install and use this product in adherence with local electrical codes and regulations.





FIXTURE PARTS

- A. Junction Box
- B. Wire Nut Connections
- C. Driver
- D. Mounting Plate
- E. Mounting Screws
- F. Fixture Base
- G. Flat Head Screws
- H. Light guide(s)

INSTRUCTIONS

I. Preparing the Fixture

1. Unbox and examine all the items included in the fixture's packaging.
2. Remove the fixture screws to separate the mounting plate from the fixture base.

II. Wiring & Installing the Fixture

1. Safety first! Locate the circuit breaker and switch it off to cut off the power supply to the relevant circuits, ensuring that there is no electricity running through the wiring.
2. Place the driver into the junction box, then connect the LED driver input wires to the local power line wires. Twist the bare ends of the following pairs of wires together using a wire nut to secure a connection:
 - a) Neutral driver wire (white) to neutral power line wire
 - b) Hot driver wire (black) to hot power line wire
3. Install the mounting plate to the junction box with the mounting screws, ensuring the output driver wires are accessible.
4. For 0-10V dimming capabilities, connect the purple and pink wires to a compatible dimmer. Cap off these wires if not in use.
5. In accordance with local electrical codes, connect the fixture ground wire (bare copper or silver wire) to a suitable ground. This may be a green ground screw on the mounting plate, which the ground wire should be tightly wrapped around, or a house wire (green or bare copper wire without insulation).
6. Twist the bare ends of the following pairs of wires together using a wire nut to secure a connection:
 - a) Negative (-/blue) fixture wire to negative (-) output wire
 - b) Positive (+/red) fixture wire to positive (+) output wire
7. Mount the fixture base onto the mounting plate and secure it in place with the flat head screws.
8. Screw the light guide(s) onto the fixture to complete the installation